



SOLID
TO SUCCEED

TELESCOPIC BOOM LIFT

XGS50E



The print does not belong to the contract, nor a part of the vehicle purchase contract. We reserve the right to revise the product model, parameters, configuration based on the continuous improvement requirements of the product, without prior notice. Pictures are for reference only, and the specific product shall depend on the real product.

XGS50E

Telescopic boom lift

FEATURES

MEASUREMENTS

50m working height
Up to 300/460kg lift capacity

PRODUCTIVITY

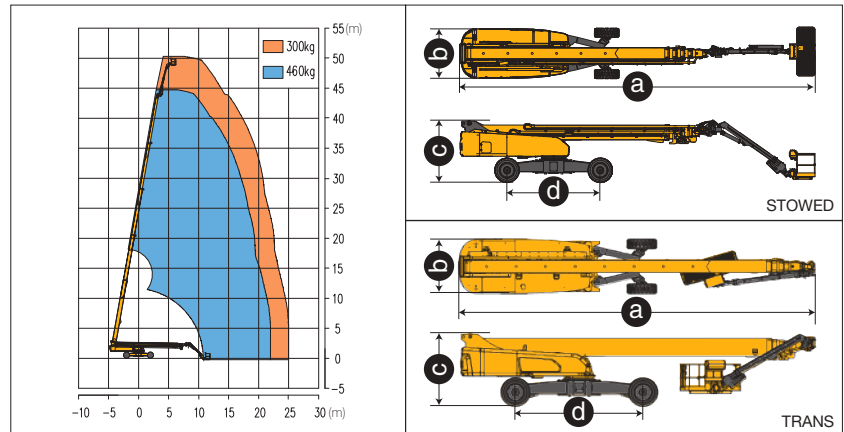
2.4m x 0.9m steel platform
4 driving wheels
4 steering wheels
40% theoretical gradeability
360° continuous turntable rotation
160° platform rotation
Enable switch
Hourmeter recorder
Drive alarm
Tilt alarm
Overload alarm
Lift and lower alarm
Turntable control box
Flashing beacon
Solid rubber tires
Hydraulic oil cooler
Steering lever control
Lockable canopy
Platform automatic leveling system
Fully proportional multi-function controls

POWER

Engine protection devices
Kubota Euro stage V emission
12V DC emergency power

OPTIONS

Tool tray
Platform working light
Foam-filled rough terrain tires
AC power to the platform
Platform anti-collision device



Item	Unit	XGS50E
Working height	m	50
Platform height	m	48
Working radius	m	25.2
Lift capacity	kg	300/460
Occupant capacity	-	3
Boom luffing range	°	0~+80
Fly jib luffing range	°	-45~+75
Turntable rotation	°	360
Platform rotation	°	160
Drive speed (retracted/extended)	km/h	4.5/0.5
Turning radius axle retracted (inside/outside)	m	7.6/9.5
Turning radius axle extended (inside/outside)	m	2.8/6.6
Tailswing	mm	2000
Ground clearance	mm	400
Gradeability	%	45
Tires	-	455/50D710 24
Power source	-	Kubota V3307
Rated power	kW/(r/min)	54.6/(2200)
Fuel tank	L	200
Hydraulic tank	L	250
Weight	kg	24440
Platform size	mm	2400x900
Transportation dimension	mm	12550x2490x3000
a Length	mm	17460
b Width	mm	2490
c Height	mm	3000
d Wheelbase (axle retracted/axle extended)	mm	5220/4590