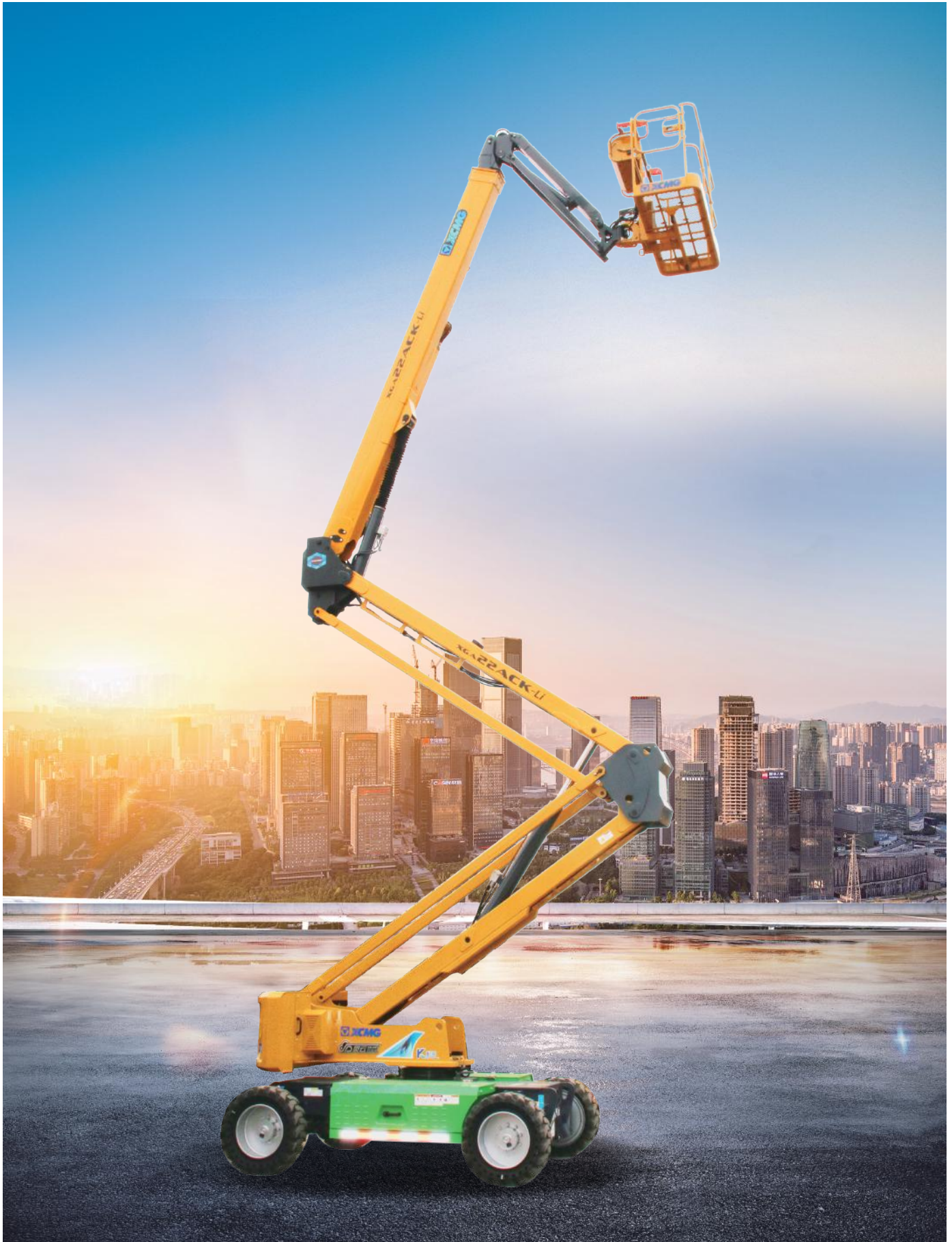




SOLID  
TO SUCCEED

ARTICULATED BOOM LIFT

# XGA22ACK



The print does not belong to the contract, nor a part of the vehicle purchase contract. We reserve the right to revise the product model, parameters, configuration based on the continuous improvement requirements of the product, without prior notice. Pictures are for reference only, and the specific product shall depend on the real product.

# XGA22ACK

Articulated boom lift

## FEATURES

### MEASUREMENTS

22.21m working height  
up to 256/350kg lift capacity

### PRODUCTIVITY

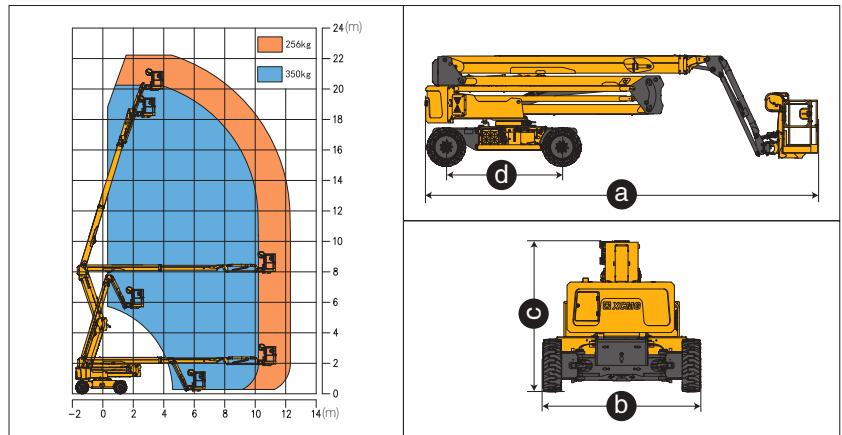
1.8m x 0.76m working platform  
Full opening doors, two entry platforms  
160° platform rotation  
Automatic platform levelling  
Proportional handle control  
Enable switch  
Hourmeter record  
Full time positive traction drive  
Telematics pre-interface  
Initiative anti-extrusion system  
40% theoretical gradeability  
Dual load range control  
Primary power source chargers

### POWER

400Ah/48V Lead-acid batteries  
1.9kW/12V DC emergency control unit  
12V DC proportional control

## OPTIONS

Platform working light  
Tool tray  
Non-marking tires  
456Ah/51.52V Lithium batteries



Item	Unit	XGA22ACK
Working height	m	22.21
Platform height	m	20.21
Working radius	m	12.23
Lift capacity	kg	256/350
Occupant capacity	-	2
1st Boom luffing range	°	0~70
2nd Boom luffing range	°	0~71
Fly jib luffing range	°	-65~+70
Turntable rotation	°	360
Platform rotation	°	160
Drive speed (retracted/extended)	km/h	4.5/0.6
Turning radius (inside/outside)	m	3.5/5
Tailswing	mm	560
Ground clearance	mm	300
Gradeability	%	40
Tires	-	835x295(200.5)
Control system	-	12V DC proportional control
Emergency control unit	kW/V	1.9/12 DC
Batteries	V/Ah	48/400 Lead-acid (standard) 51.52/456 Lithium (optional)
Charger	V/A	48/35 Lead-acid (standard) 48/60 Lithium (optional)
Main power unit	kW/V	12/32
Drive motor	kW/V	3.3/32
Hydraulic tank	L	103
Weight	kg	10100
Platform size	mm	1800x760
a Length (transportation)	mm	8490/7250
b Width	mm	2490
c Height	mm	2380
d Wheelbase	mm	2500

SOLID TO SUCCEED