



SOLID
TO SUCCEED

TELESCOPIC BOOM LIFT

XGS22E



The print does not belong to the contract, nor a part of the vehicle purchase contract. We reserve the right to revise the product model, parameters, configuration based on the continuous improvement requirements of the product, without prior notice. Pictures are for reference only, and the specific product shall depend on the real product.

XGS22E

Telescopic boom lift

FEATURES

MEASUREMENTS

22m working height
Up to 300/460kg lift capacity

PRODUCTIVITY

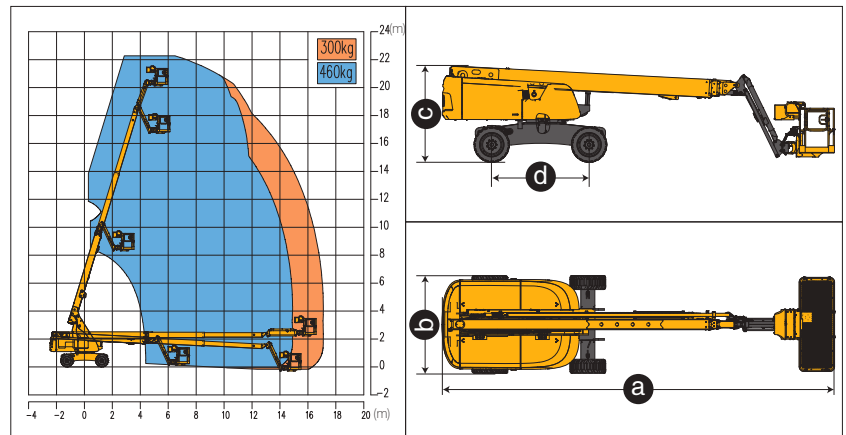
2.4m × 0.9m working platform
4 driving wheels
2 steering wheels
45% theoretical gradeability
160° platform rotation
Fully proportional multi-function controls
Lift and lower alarm
Drive alarm
Tilt alarm
Overload alarm
Axle balance system
Platform automatic leveling system
Enable switch
Hourmeter recorder
360° continuous turntable rotation
Flashing beacon
Solid rubber tires
Hydraulic oil cooler
Steering lever control

POWER

Engine protection devices
Kubota/Deutz Euro stage V emission
12V DC emergency power

OPTIONS

Tool tray
Platform working light
Foam-filled rough terrain tires
AC power to the platform
Platform anti-collision device
Deutz D2.9L4 36.4kW/(2600r/min)



| Item | Unit | XGS22E |
|----------------------------------|------------|---------------------|
| Working height | m | 22 |
| Platform height | m | 20 |
| Working radius | m | 17.2 |
| Lift capacity | kg | 300/460 |
| Occupant capacity | - | 3 |
| Boom luffing range | ° | -3~+73 |
| Fly jib luffing range | ° | -65~+70 |
| Turntable rotation | ° | 360 |
| Platform rotation | ° | 160 |
| Drive speed (retracted/extended) | km/h | 6.3/0.6 |
| Turning radius (inside/outside) | m | 3.28/6 |
| Tailswing | mm | 1310 |
| Ground clearance | mm | 230 |
| Gradeability | % | 45 |
| Tires | - | 36×14-20;335/55D625 |
| Power source | - | Kubota V2403 |
| Rated power | kW/(r/min) | 36.8/(2700) |
| Fuel tank | L | 150 |
| Hydraulic tank | L | 120 |
| Weight | kg | 12460 |
| Platform size | mm | 2400×900 |
| a Length (transportation) | mm | 10080/7880 |
| b Width | mm | 2490 |
| c Height | mm | 2460 |
| d Wheelbase | mm | 2500 |