



**SOLID**  
TO SUCCEED

ARTICULATED BOOM LIFT

**XGS70K**



The print does not belong to the contract, nor a part of the vehicle purchase contract. We reserve the right to revise the product model, parameters, configuration based on the continuous improvement requirements of the product, without prior notice. Pictures are for reference only, and the specific product shall depend on the real product.

# XGS70K

## Articulated boom lift

### FEATURES

### MEASUREMENTS

69.6m working height  
Up to 230/300/460kg lift capacity

### PRODUCTIVITY

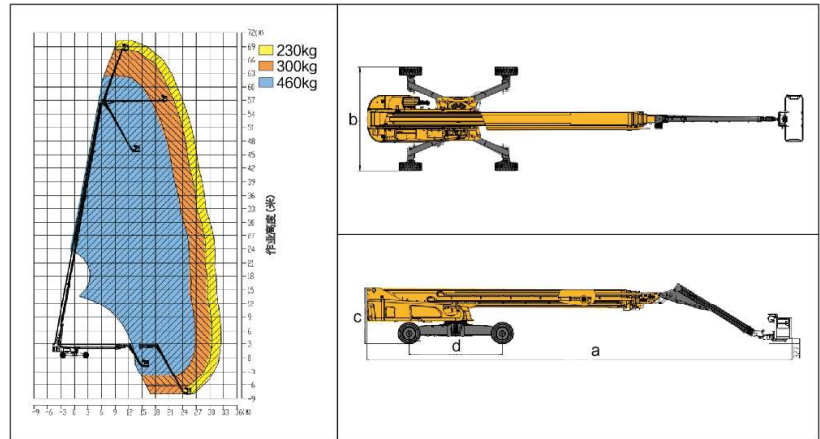
2.4×0.9m working platform  
4 driving wheels  
4 steering wheels  
35% theoretical gradeability  
360°continuous turntable rotation  
160°platform rotation  
Tilt alarm  
Drive alarm  
Enable switch  
Overload alarm  
Hourmeter recorder  
Lift and lower alarm  
Turntable control box  
Chassis tilt protection device  
Wire rope anti-loosening detection system  
Wind speed monitoring protection device  
Load and amplitude limit detection system  
Platform automatic leveling system  
Fully proportional multi-function controls

### POWER

Cummins 74kW/(2200r/min)  
12V DC emergency power

### OPTIONS

Tool tray  
Platform working light  
Foam-filled rough terrain tires  
AC power to the platform  
Platform anti-collision device



| Item   | Unit       | XGS70K          |
|--|------------|-----------------|
| Working Height                                 | m          | 69.6            |
| Platform Height                                | m          | 67.6            |
| Working radius                                 | m          | 32              |
| Lift capacity                                  | kg         | 230/300/460     |
| Occupant Capacity                              | -          | 3               |
| Boom luffing range                             | °          | 0 ~ 79.5        |
| Fly jib luffing range                          | °          | -61 ~ 70        |
| Turntable rotation                             | °          | 360             |
| Platform rotation                              | °          | 160             |
| Drive Speed (retracted/extended)               | km/h       | 4.5/0.2~0.5     |
| Turning Radius axle retracted (inside/outside) | m          | 7.8/9.7         |
| Turning Radius axle extended (inside/outside)  | m          | 2.7/6.9         |
| Tailswing                                      | mm         | 2100            |
| Ground clearance                               | mm         | 300             |
| Gradeability                                   | %          | 35              |
| Tires  | -          | 445/55-25 R28   |
| Power source                                   | -          | Cummins         |
| Rated power                                    | kW/(r/min) | 74 (2200)       |
| Fuel tank                                      | L          | 210             |
| Hydraulic tank                                 | L          | 340             |
| Weight   | kg         | 35400           |
| Platform size                                  | mm         | 2400×900        |
| Transportation dimension                       | mm         | 16000×2490×3070 |
| a Length                                       | mm         | 23150           |
| b Width  | mm         | 5500            |
| c Height                                       | mm         | 3070            |
| d Wheelbase (axle retracted/axle extended)     | mm         | 5889(5080)      |