



SOLID
TO SUCCEED

ARTICULATED BOOM LIFT

XGA20ACE



The print does not belong to the contract, nor a part of the vehicle purchase contract. We reserve the right to revise the product model, parameters, configuration based on the continuous improvement requirements of the product, without prior notice. Pictures are for reference only, and the specific product shall depend on the real product.

XGA20ACE

Articulated boom lift

FEATURES

MEASUREMENTS

20.6m working height
Up to 256/350kg lift capacity

PRODUCTIVITY

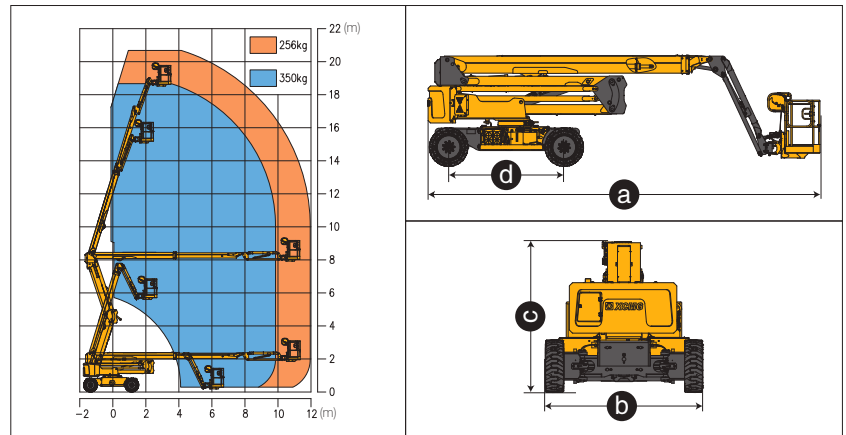
1.83m x 0.76m working platform
4 driving wheels
2 steering wheels
45% theoretical gradeability
Solid non-marking tires
Platform automatic leveling system
160° platform rotation
Fully proportional multi-function controls
Enable switch
Horn
Hourmeter record
Tilt alarm
Lift and lower alarm
Drive alarm
360° continuous turntable rotation
Lockable canopy
High/Slow speed mode
Flashing beacon
Axle balance system

POWER

400Ah/48V Lead-acid batteries
1.9kW/12V DC emergency control unit
12V DC proportional control

OPTIONS

Platform working light
Tool tray
Non-marking tires
404Ah/48V Lithium batteries



Item	Unit	XGA20ACE
Working height	m	20.6
Platform height	m	18.6
Working radius	m	11.98
Lift capacity	kg	256/350
Occupant capacity	-	2
1st Boom luffing range	°	0~72
2nd Boom luffing range	°	0~+73
Fly jib luffing range	°	-64~+70
Turntable rotation	°	360
Platform rotation	°	160
Drive speed (retracted/extended)	km/h	4.8/0.6
Turning radius (inside/outside)	m	3.4/5
Tailswing	mm	560
Ground clearance	mm	300
Gradeability	%	45
Tires	-	835x295
Control system	-	12V DC proportional control
Emergency control unit	kW/V	1.9/12 DC
Batteries	V/Ah	48/400 Lead-acid (standard) 48/404 Lithium (optional)
Charger	V/A	48/35 Lead-acid (standard) 48/60 Lithium (optional)
Main power unit	kW/V	12/32
Dirve motor	kW/V	3.3/32
Hydraulic tank	L	82
Weight	kg	9100
Platform size	mm	1800x760
a Length (transportation)	mm	8490/6230
b Width	mm	2490
c Height	mm	2380
d Wheelbase	mm	2500

SOLID TO SUCCEED